

SPECIFICATIONS

MAXIMUM SIZE CURTAIN

Openings up to 12 ft. high (consult factory for larger sizes)

Folding 6 1/2" wide extruded aluminum panels interconnected with integral continuous vertical hinges

Model FO - panels divided by vertical aluminum rods and horizontal stiffeners in a 2 5/16" wide, 12" high open pattern

Model FC - panels with clear polycarbonate glazing inserts to provide a closed panel with visibility

Model FV - panels with 3/16" x 3/4" diagonal perforations on staggered centers to provide 50% visibility and ventilation

Model FS - panels fabricated from solid aluminum

Model FG - horizontal links interconnected with vertical rods in a 3" wide, 12" high pattern

POSTS LOCKS

Rectangular aluminum extrusion connected to lead and rear panels and intermediately every 10 ft. (and corners as required)

Cylinder activated hook lock in lead post with full height wall strike; cylinder activated bottom throw-bolt lock in receiver and intermediate posts (when provided) with floor strike; self-locking trailing edge on rear post engages floor & ceiling stop

TOP TRACK ROLLERS

Extruded aluminum, 1 3/4" x 1 5/8" x 1/8" thick with steel connection plate and alignment pins at each splice

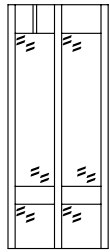
FINISH

Mill finish (FG), clear anodized (FO, FC, FV, FS) aluminum curtain, posts and top track

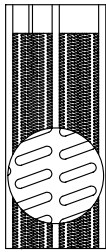
WARRANTY

One year limited warranty (excluding finish)

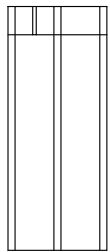
ALTERNATE MODELS



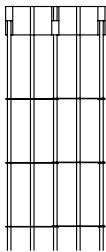
MODEL FC
CLEAR PANEL



MODEL FV
VENT PANEL



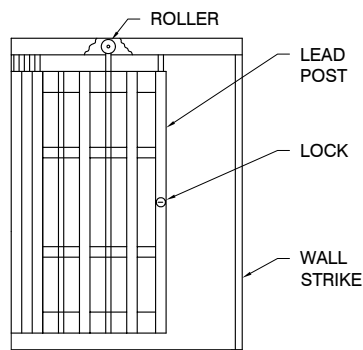
MODEL FS
SOLID PANEL



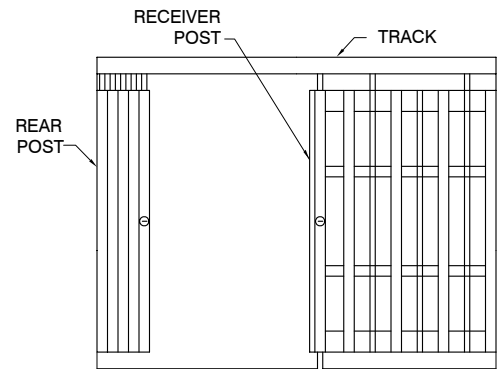
MODEL FG
ROD & LINK

CLOSURE DETAILS

MODEL FO - OPEN PANEL SHOWN

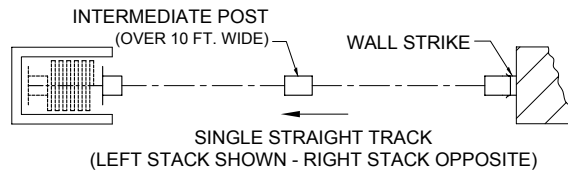


SINGLE

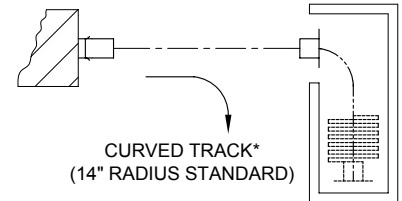


BI-PARTING

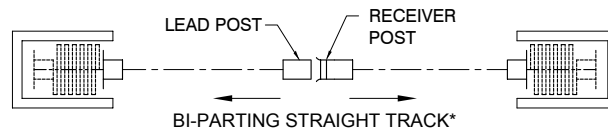
MOUNTING DETAILS



SINGLE STRAIGHT TRACK
(LEFT STACK SHOWN - RIGHT STACK OPPOSITE)



CURVED TRACK*
(14" RADIUS STANDARD)



BI-PARTING STRAIGHT TRACK*

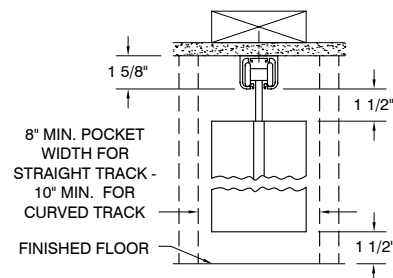
APPROXIMATE STACKING CLEARANCES:
Closures to 10' wide - 1" per ft. of width + 10"
Closures over 10' to 20' wide - 1" per ft. of width + 15"
Closures over 20' wide are provided in multiple floating sections with stacking clearances as noted above.
NOTE: Add 5" for each extra post that may be required in addition to what is provided standard (such as at corners, for additional locking, etc.)

*AVAILABLE AS AN OPTION

COMMON OPTIONS

- Clear or bronze anodized finish
- Powder coat finish (not available on FG)
- Special cylinders
- Curved tracks
90°, 45°, 30° bends
Single or compound curves
Custom bends or radius

TRACK DETAIL



EXPOSED TRACK SHOWN - TRACK MAY BE RECESSED

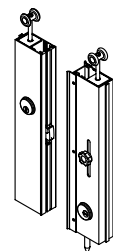
LOCKING DETAILS



Lead Post
Hook Lock



Intermediate Post
Bottom Lock



Bi-Parting Post
Hook Lock & Bottom Lock